

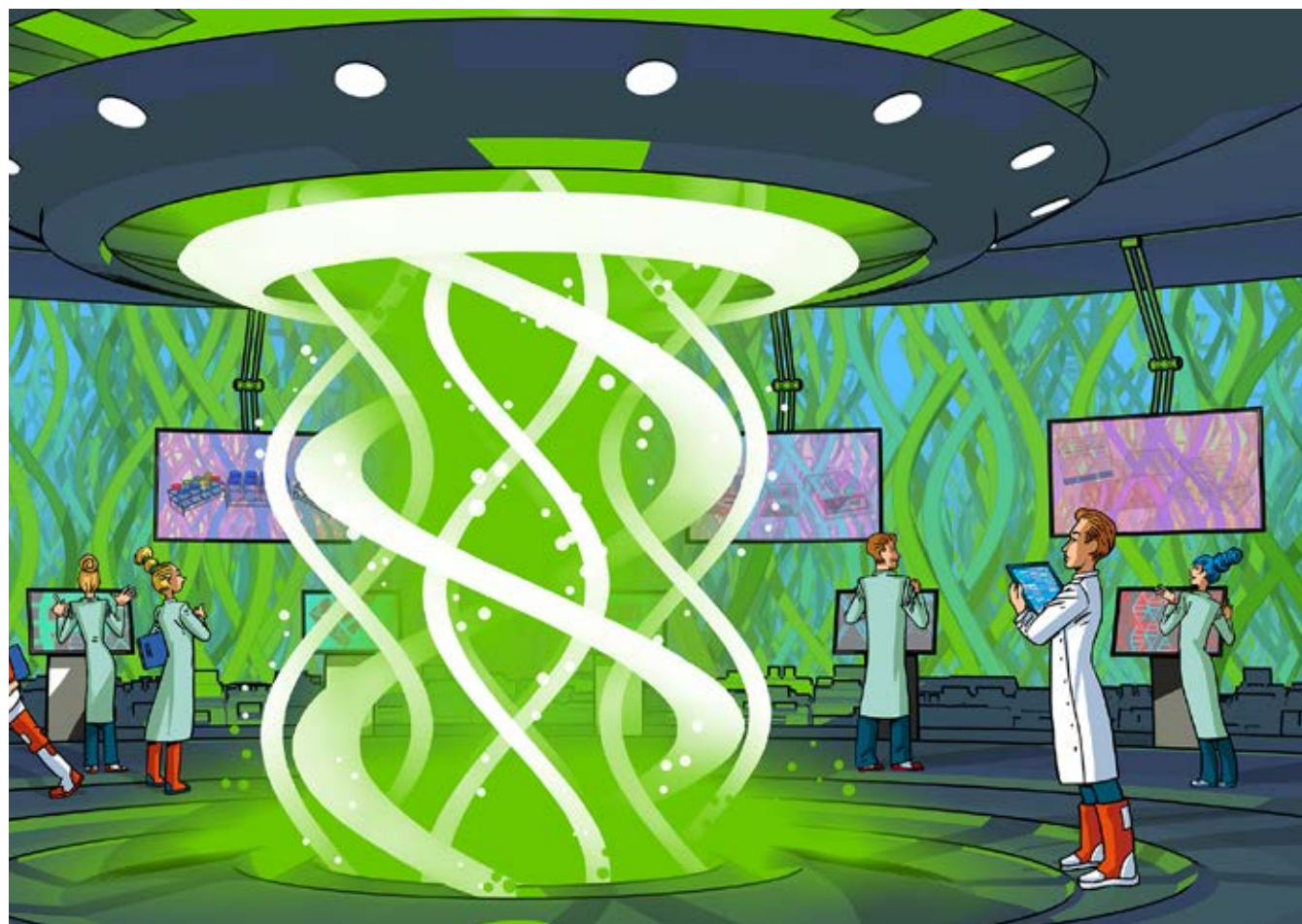
# POLYSTYRENE TUBES, STRAIGHT NECK

Simport® Polystyrene tubes, straight neck



TUBES  
AND TRACKS

Volume (ml)	5						8	14	15	
Ø ext. (mm)	12	12	12	12	12	12	13	17	17	17
Height (mm)	75	75	75	75	75	75	100	100	120	120
Material	Polystyrene									
Sterile	No									
Bottom	Rounded	Rounded	Rounded	Rounded	Rounded	Rounded	Rounded	Rounded	Conical	Conical
Caps	Without									
Type of neck	Straight	Straight	Straight	Straight	Straight	Straight	Straight	Straight	Straight with edge	Straight with edge
Autoclavable	No									
Max. Centrifugation speed (g)	1400	1400	1400	1400	1400	1400	1400	1400	1200	1200
Skirt	No									
Graduation	No	No	No	No	No	No	No	No	Yes 0.25, 0.5, 1.0, 2.5, 5, 10, 12 and 15 ml	Yes 0.25, 0.5, 1.0, 2.5, 5, 10, 12 and 15 ml
Marking area	No									
Colour	Transparent	Transparent	Blue	Green	Orange	Yellow	Transparent	Transparent	Transparent	Transparent
Operating temperature	+20 °C to +90 °C									
Specifications	-	-	-	-	-	-	-	-	Chemically inert; metal-free	
Units/box	Bag of 1000 tubes	8 bags of 125 tubes	Bag of 1000 tubes	Bag of 1000 tubes	Bag of 1000 tubes	Bag of 1000 tubes	Bag of 1000 tubes	Bag of 1000 tubes	10 bags of 100 tubes	Bag of 1000 tubes
Cat. No. tube only	<b>039426</b>	<b>039431</b>	<b>039427</b>	<b>039428</b>	<b>039429</b>	<b>039430</b>	<b>039385</b>	<b>039443</b>	<b>039390</b>	<b>039391</b>
€ Excl. VAT/box	NC -	NC -	NC -	NC -	NC -	NC -	NC -	NC -	NC -	NC -



Indicative prices. Visit [www.dulis.nl](http://www.dulis.nl)