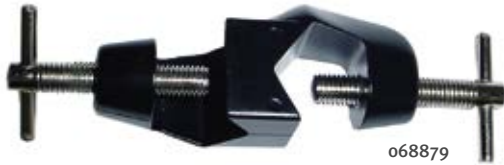


Clamps for stands (continued)



068879



068820



068823



068822

068825



Clamping nuts for stands

► Perpendicular" nuts for perpendicular structures

Cat. No.	Description	Rod \varnothing (mm)	Material	€
068879	Doble bosshead	<16	Resin coated	NC -
068820	Doble bosshead	<14	Nickel	NC -
068822	Rotary double bosshead, 360°	<18	zinc-plated	NC -
068823	Doble bosshead	<18	Alloy	NC -
068824	Bosshead type P	10	Ni / Cr	NC -
068825	Bosshead type P	12	Ni / Cr	NC -
068826	Bosshead type P	16	Ni / Cr	NC -
068827	Allen key	-	Steel	NC -



Complete stand with rod

Cat. No.	Shape	Colours	Base dimensions (mm)	Base weight (kg)	Feet rubber	Dimensions rod (\varnothing x H) (mm)	€
810699	A	Blue	200 x 30	-	-	10 x 600	NC -
810700	Rectangle	Black	100 x 175	0.47	-	10 x 500	NC -
810701	Rectangle	Black	125 x 225	0.76	Yes	10 x 500	NC -
810702	Rectangle	Black	150 x 250	1.0	Yes	10 x 600	NC -
810703	Rectangle	Black	165 x 300	1.2	Yes	10 x 900	NC -
810705	Rectangle	Blue	200 x 140	1.0	-	10 x 600	NC -
942983	Rectangle	Blue	300 x 175	1.6	-	10 x 600	NC -