



DD range - Culture media

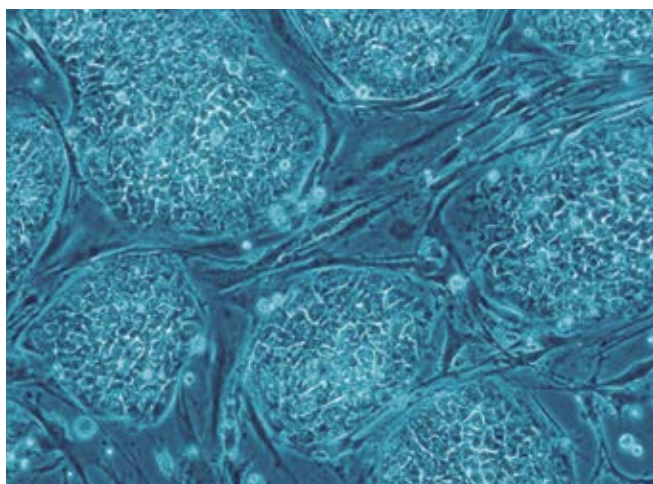
MEM modified ALPHA

L-Glutamine	NaHCO ₃	Cat. No.	Volume	€ Excl. VAT
√	√	Lo475-500	500 ml	NC -
-	√	Lo476-500	500 ml	NC -
Solution without ribonucleosides and deoxyribonucleosides				
√	√	Lo475-500	500 ml	NC -
-	√	Lo476-500	500 ml	NC -
Powder with Earle's salt				
√	-	Po440-N1L	1 l	NC -



M199

L-Glutamine	Earle's Salt	Hank's Salt	NaHCO ₃	HEPES	Cat. No.	Volume	€ Excl. VAT
√	-	√	√	-	Lo330-500	500 ml	NC -
√	√	-	1.25 g/l	-	Lo355-500	500 ml	NC -
-	√	-	√	-	Lo356-500	500 ml	NC -
Stable	√	-	√	√	Lo361-500	500 ml	NC -
Powder							
-	-	√	-	-	Po410-N1L	1 l	NC -
√	√	-	-	-	Po420-N1L	1 l	NC -
√	√	-	-	25 mM	Po425-N1L	1 l	NC -



MEM (Minimum Essential Medium)

L-Glutamine	Earle's Salt	Hank's Salt	NEAA	HEPES	NaHCO ₃	Cat. No.	Volume	€ Excl. VAT
√	√	-	-	-	√	Lo415-500	500 ml	NC -
Stable	√	-	-	-	√	Lo416-500	500 ml	NC -
-	√	-	√	-	√	Lo430-500	500 ml	NC -
-	√	-	-	-	√	Lo440-500	500 ml	NC -
√	√	-	-	25 mM	√	Lo444-500	500 ml	NC -
-	-	√	-	25 mM	√	Lo470-500	500 ml	NC -
Powder								
√	√	-	√	-	-	Po450-N1L	1 l	NC -
√	√	-	-	-	-	Po451-N1L	1 l	NC -
√	-	√	√	-	-	Po515-N1L	1 l	NC -

RMPI 1640

L-Glutamine	HEPES	Phenol red	NaHCO ₃	Cat. No.	Volume	€ Excl. VAT
√	-	√	√	Lo500-100	100 ml	NC -
√	-	√	√	Lo500-500	500 ml	NC -
-	-	√	√	Lo501-100	100 ml	NC -
-	-	√	√	Lo501-500	500 ml	NC -
Stable	-	√	√	Lo498-500	500 ml	NC -
√	25 mM	√	√	Lo495-500	500 ml	NC -
Stable	25 mM	√	√	Lo496-500	500 ml	NC -
-	25 mM	√	√	Lo490-500	500 ml	NC -
-	-	√	√	Lo503-500*	500 ml	NC -
-	-	-	√	Lo505-500	500 ml	NC -
Powder						
√	-	√	-	Po860-N1L	1 l	NC -
-	-	√	-	Po870-N1L	1 l	NC -
√	-	-	-	Po880-N1L	1 l	NC -
-	-	-	-	Po871-N1L	1 l	NC -
√	25 mM	-	-	Po876-N1L	1 l	NC -
√	-	-	-	Po883-N1L	1 l	NC -

* without folic acid

Contact our "Sera and cell culture media" specialists



Véronique PEYROL
veronique.peyrol@dulis.be



Estelle RINN
estelle.rinn@dulis.be