

ClearLine® Petri dishes

- ▶ Made of crystal polystyrene, superior clarity
- ▶ Manufactured under ISO Class 7 conditions
- ▶ Available aseptic or sterile (E-Beam irradiated, 10 kgy)



* General dimensions, see the data sheets on www.dulis.nl for more details.
** Double packaging

Dimensions* (mm)	Vents	Units/bag	Units/carton	Aseptic		E-Beam Irradiated	
				Cat.No	€ Excl. VAT carton	Cat.No	€ Excl. VAT carton
55 x 14 (Ø x H)	Without	15	1200	076059	NC -	076059S	NC -
55 x 14 (Ø x H)	3	15	1200	076058	NC -	076058S	NC -
90 x 13 (Ø x H)	Without	20	500	020006B	NC -	020006BS	NC -
90 x 14.2 (Ø x H)	3	33	825	257045	NC -	-	-
90 x 13 (Ø x H)	3	20	500	076084B	NC -	076084BS	NC -
90 x 13 (Ø x H)	3	20	500	076064**	NC -	-	-
120 x 120 x 15 (W x L x H)	4	10	240	076063	NC -	076063S	NC -
140 x 13 (Ø x H)	4	15	165	076060B	NC -	076060SD	NC -

Antibiotic discs

- ▶ Cellulose discs for anti-biograms
- ▶ Diameter : 6, 9 or 12 mm

Cat. No.	Description	Units/carton	€ Excl. VAT/carton
074074	Antibiotic disc 6 mm	1000	NC -
074113	Antibiotic disc 9 mm	1000	NC -
074114	Antibiotic disc 13 mm	1000	NC -



Greiner Bio-One Petri dishes

Petri dishes

Polystyrene Petri dishes, with or without vents, excellent clarity, high quality with flat and stable bottom. A "heavy" version has more material which further increases stability.

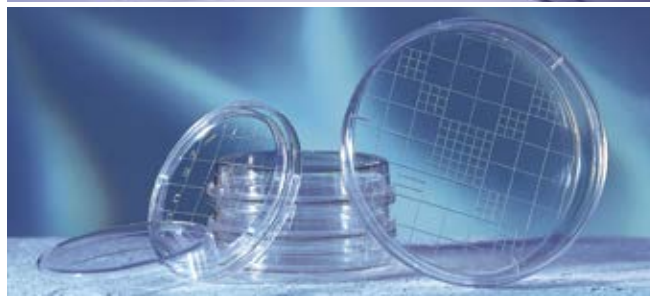
3 versions: aseptic (not sterilised by irradiation), sterile E-Beam irradiated (electron bombardment) and sterile gamma irradiated.

Ø x h (mm)	Vents	Units/bag	Units/carton	Aseptic		E-Beam Irradiated		Gamma Irradiated	
				Cat.No	€ Excl. VAT	Cat.No	€ Excl. VAT	Cat.No	€ Excl. VAT
35 x 15	Yes	10	740	627102	NC -	-	-	-	-
55 x 12***	No	15	1620	020003	NC -	-	-	-	-
60 x 15	Yes	20	600	628102	NC -	628161	NC -	628162B	NC -
93 x 21*	Yes	15	360	664102	NC -	-	-	664161	NC -
94 x 16	Yes	20	480	633180	NC -	-	-	-	-
94 x 16*	Yes	20	480	-	-	-	-	-	-
94 x 16	No	20	480	632180	NC -	-	-	-	-
94 x 16*	No	20	480	-	-	-	-	632191	NC -
145 x 20	Yes	15	120	639102	NC -	639161	NC -	639101	NC -
120 x 120 x 17 (Square)	Yes	10	240	688102	NC -	-	-	688162	NC -

* Heavy version, high-stability

** Economy version

*** double packaging and easy opening



Contact Petri dishes

Contact Petri dishes are specifically designed for surface sampling to locate or identify micro-organisms. Graduated bottom divided into squares for an easier colony count. Contact dishes are available in either aseptic (non-radiation sterilised) or sterile E-BEAM irradiated versions.

Cat. No.	Dimensions (mm)	Vents	Sterile	Unit unit.	Units/carton	€ Excl. VAT/carton
629161	65 x 15	No	E-Beam	20	600	NC -
629180	65 x 15	Yes	E-Beam	20	600	NC -
629102	66 x 15	No	Aseptic*	20	600	NC -

* Not sterilised by irradiation

Special Petri dishes

Cat.No	Ø x H (mm) / feature	Vented	Aseptic*	Pack unit	Units/carton	€ Excl. VAT/carton
635102	94 x 16 2 compartments	Yes	Yes	20	480	NC -
657102	6 wells 15 ml	Yes	Yes	2	100	NC -

* Not sterilised by irradiation



See pages 590 and following for bacteriology media