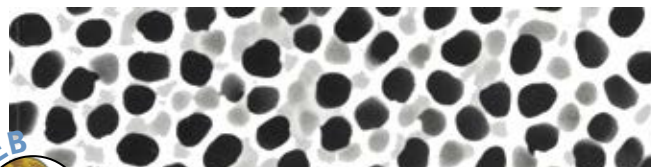


Whatman™ Membrane filters

Polytetrafluoroethylene (PTFE)

- > Hydrophobic membrane, resistant to organic solvents and strong acids and bases (e.g. HPLC solvent filtration)

Cat. No.	Type	Filtration threshold (µm)	Membrane	Diameter (mm)	Units/box	€/box
036869	TE35	0.2	PTFE	47	50	NC -
034962	TE35	0.2	PTFE	50	50	NC -
036871	TE36	0.45	PTFE	47	50	NC -
037317	TE36	0.45	PTFE	50	50	NC -
036872	TE37	1	PTFE	47	50	NC -
036873	TE38	5	PTFE	47	50	NC -



Enter the reference on dulis.nl to find the chemical compatibility guide for Whatman™ membrane filters

PTFE: polytetrafluoroethylene; PNA: , Anopore™ ; RC : regenerated cellulose; AC: cellulose acetate; NYL: nylon/polyamide

Regenerated cellulose (RC)

- > Low protein adsorption
- > Hydrophilic membrane
- > Resistant to a wide variety of solvents
- > Suitable for use with aqueous solutions or organic solvents
- > Compatible with solvents used in HPLC

Cat. No.	Type	Filtration threshold (µm)	Membrane	Diameter (mm)	Units/box	€/box
034972	RC58	0.2	RC	47	100	NC -
037178	RC58	0.2	RC	50	100	NC -
036824	RC55	0.45	RC	47	100	NC -
037159	RC55	0.45	RC	50	100	NC -
036885	RC60	1	RC	47	100	NC -

Nylon/Polyamide (NYL)

- > Hydrophilic membrane
- > Resistant to certain organic solvents, suitable for use with high pH samples (e.g. mobile phase filtration, buffers, etc.)

Cat. No.	Type	Filtration threshold (µm)	Membrane	Diameter (mm)	Units/box	€/box
036874	NL16	0.2	Polyamide	25	100	NC -
036875	NL17	0.5	Polyamide	25	100	NC -
036876	NL16	0.2	Polyamide	47	100	NC -
036877	NL17	0.45	Polyamide	47	100	NC -
037318	NL16	0.2	Polyamide	50	100	NC -
037319	NL17	0.45	Polyamide	50	100	NC -

Anopore™ (ANP)

- > Low protein adsorption
- > Hydrophilic membrane, excellent compatibility with organic solvents
- > Extremely accurate pore size distribution, very low filtration threshold
- > Ensures minimal extractables
- > Virtually transparent: ideal for microscopic examinations

Cat. No.	Type	Filtration threshold (µm)	Membrane	Diameter (mm)	Units/box	€/box
036191	Anodisc	0.02	Anopore	25	50	NC -
036886	Anodisc	0.1	Anopore	25	50	NC -
036413	Anodisc	0.2	Anopore	25	50	NC -
036188	Anodisc	0.02	Anopore	47	50	NC -
036189	Anodisc	0.1	Anopore	47	50	NC -
036190	Anodisc	0.2	Anopore	47	50	NC -

Cellulose acetate (CA)

- > Hydrophilic membrane, low protein adsorption (ideal for protein recovery applications)
- > Limited solvent resistance

Cat. No.	Type	Filtration threshold (µm)	Membrane	Diameter (mm)	Units/box	€/box
036878	OE66	0.2	AC	47	100	NC -
036879	OE67	0.45	AC	47	100	NC -
036881	ST68	0.8	AC	47	100	NC -
036882	ST69	1.2	AC	47	100	NC -

Whatman™ Sterile cellulose ester membrane filters

- > For microbiological controls
- > Individual strip packaging, STL format, compatible with Merck Millipore and Sartorius dispensers
- > Different grids and colours
- > Sterilised with ethylene oxide
- > Mixed cellulose esters
- > Thickness : 135 µm



Enter the reference on dulis.nl to find the selection guide and the chemical compatibility guide for Whatman™ membranes

Membranes ME 25 Select

- > Black grid on white background
- > E.Coli recovery above 90%

Cat. No.	Diameter (mm)	Pore size (µm)	Units/box	€/box
037097	50	0.45	4 X 100	NC -



036900

STL membranes for use with dispenser

Cat. No.	Type	Filtration threshold (µm)	Membrane	Ø (mm)	Units/box	€/box
10407312	ME 25/21 STL	0.45	White / Black grid 3.1 mm	47	4 x 100	NC -
10407314	ME 25/21 STL	0.45	White / Black grid 3.1 mm	50	4 x 100	NC -
10407332	ME 25/31 STL	0.45	Black / White grid 3.1 mm	47	4 x 100	NC -
10407334	ME 25/31 STL	0.45	Black / White grid 3.1 mm	50	4 x 100	NC -
10407370	ME 25/41 STL	0.45	Green / Black grid 3.1 mm	47	4 x 100	NC -
10407372	ME 25/41 STL	0.45	Green / Black grid 3.1 mm	50	4 x 100	NC -
10408712	ME 24/21 STL	0.2	White / Black grid 3.1 mm	47	4 x 100	NC -
10408714	ME 24/21 STL	0.2	White / Black grid 3.1 mm	50	4 x 100	NC -
10407324	ME 25/20 STL	0.45	White / Black grid 5.0 mm	50	4 x 100	NC -

Membrane dispenser

Cat. No.	Description	€
036900	Manual membrane dispenser	NC -